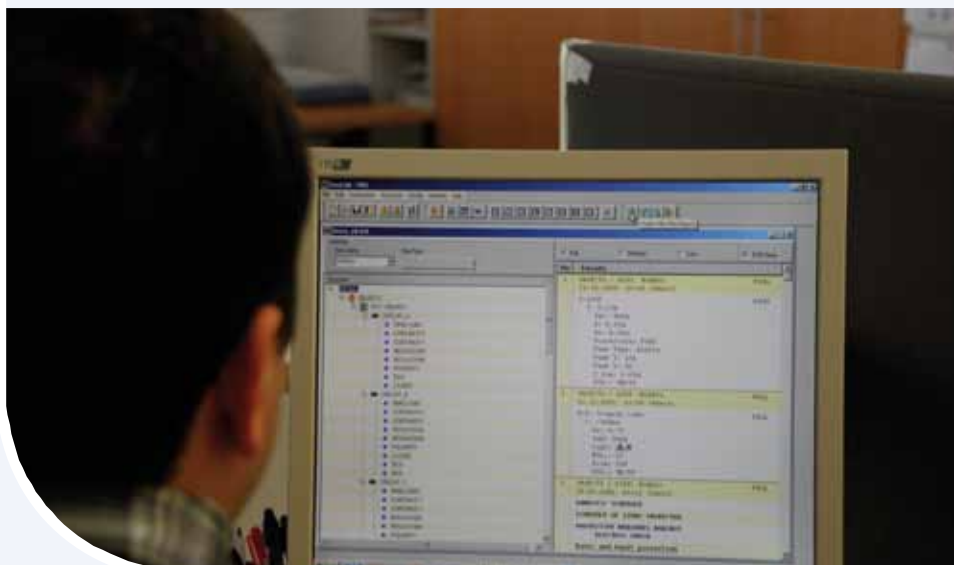


# EuroLink PRO

## PC software for downloading and analysis of test results and creation of test reports



The EuroLink PRO / PRO Plus software works in conjunction with Metrel downloadable installation testers. The software automatically finds the instrument and allows the test engineer to download test results saved on the instrument, review the results, relocate test results (if required), print test reports and print installation structures for storing in the distribution board. With the more advanced Metrel installation testers, structures can be built with the software and uploaded to the instrument for easy installation navigation while performing on-site testing. Additionally the EuroLink PRO Plus software offers the ability to automatically generate professional PRO Plus Reports.

#### Key features:

- **Automatic recognition of the instrument:** when connecting the instrument to the PC it is automatically recognized by the software.
- **Simple graphical visualisation of the installation structure:** enables graphical representation of the tested installation which makes it easy to navigate in the installation.
- **10-level structures:** in conjunction with MI 3105 and MI 3101 PC software enables creating the electrical installation structures with up to 10 levels.
- **Rearranging of structures:** the elements of the structure can be relocated and renamed.
- **Installation structures printing:** structures can be printed and stored in the distribution board for easier later identification of the installation elements.
- **Structures upload:** the installation structure can be created in advance on the PC and then simply uploaded to your tester (MI 3105, MI 3101, MI 3125B only); if needed any deviations can be adjusted on the tester on site.
- **Export of test results:** test results in text format can be exported to other programs (MS Excel, MS Word).
- **Automatic PRO Test Report generation:** enables automatic generation of PRO Test Report (low, medium and high detailed).
- **Automatic PRO Plus Test Report generation (PRO Plus version only):** enables automatic generation of PRO Plus Test Report which include visual inspection of tested object and test results in tabular form.

#### PC SW EuroLink PRO / PRO Plus is compatible with:

- MI 3105 EurotestXA
- MI 3101 EurotestAT
- MI 3102 EurotestXE
- MI 3102H EurotestXE 2,5 kV (PRO version only)
- MI 3125B EurotestCOMBO
- MI 3121 SMARTEC Insulation / Continuity
- MI 3121H SMARTEC 2,5 kV Insulation / Continuity
- MI 3122 SMARTEC Z Line-Loop RCD
- MI 3123 SMARTEC Earth Clamp

#### Key features for PRO Plus reports:

- Downloaded test results are automatically inserted onto PRO Plus forms.
- Allows to fill out visual inspection form for tested fuse cabinet or earthing system.
- Automatically selects worst case test results for form completion.
- Easy test report generation and reviewing facilities.

#### EuroLink PRO Plus enables creation of the following test reports:

- PRO Plus Test Report
- NICEIC certificates (UK)
- ZVEH certificates (Germany)
- SiNa certificates (Switzerland)
- UNE – 202008 certificates (Spain)

#### Password protection:

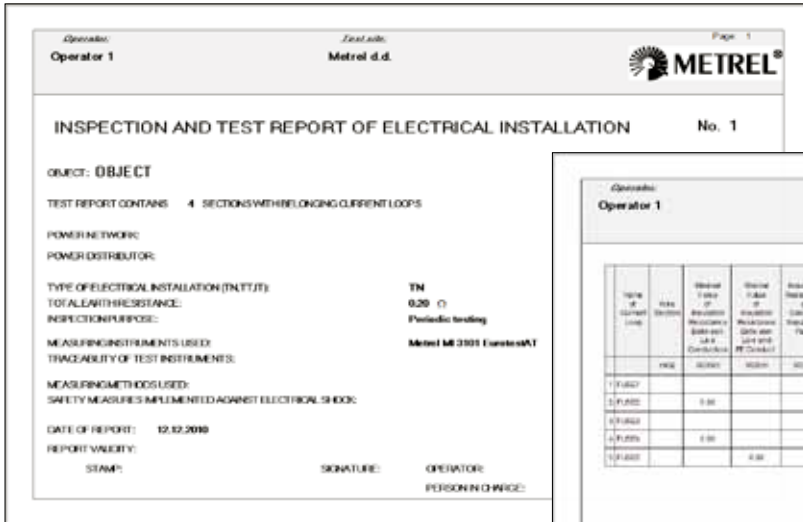
PC SW EuroLink PRO is password protected for the following instruments:

- MI 3121
- MI 3121H
- MI 3122
- MI 3123
- MI 3125B

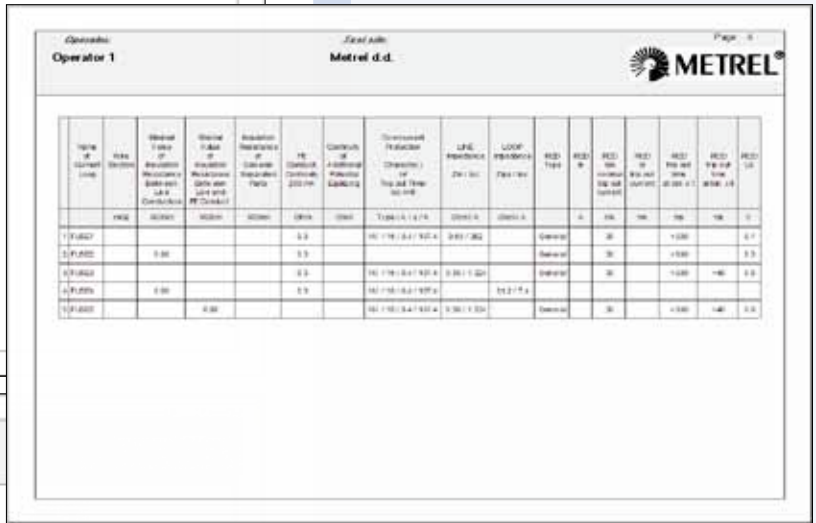
PC SW EuroLink PRO Plus is password protected for all Metrel installation testers.

#### Ordering information:

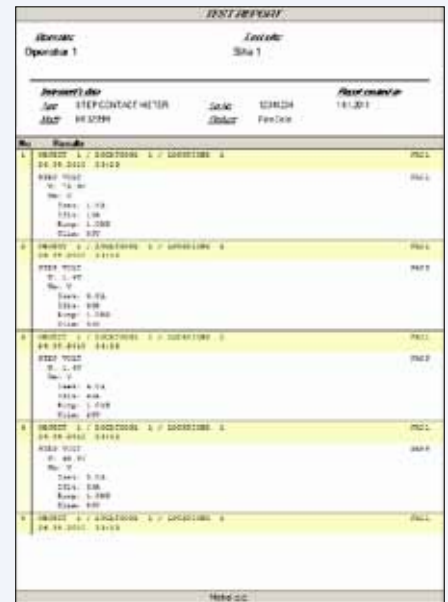
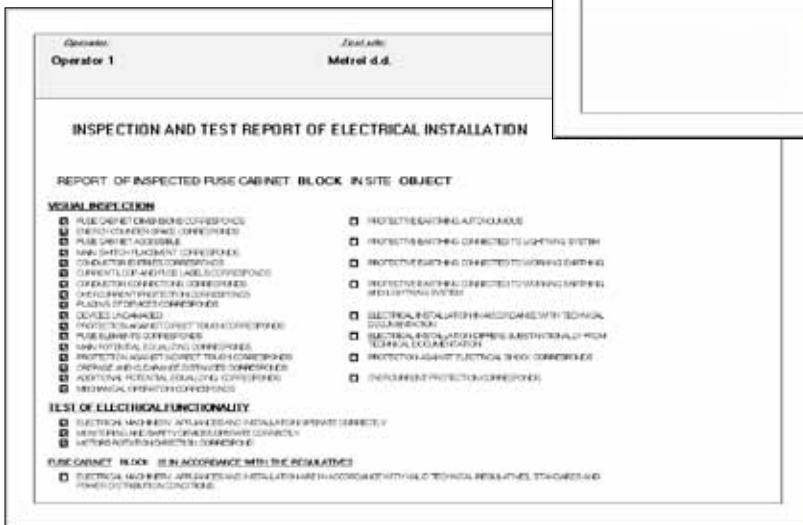
- A 1291 PC SW EuroLink PRO with USB and RS232-PS/2 cable
- A 1290 PC SW EuroLink PRO Plus with USB and RS232-PS/2 cable
- A 1292 Upgrade code EuroLink PRO to EuroLink PRO Plus



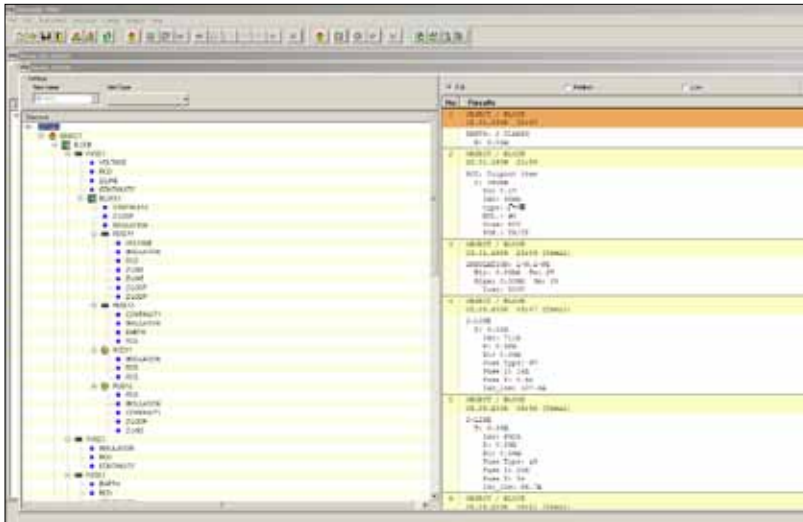
PRO Plus Test Report



PRO Test Report



Tree view installation structure can be easily rearranged by customer



Measuring and Regulation Equipment Manufacturer

METREL d.d.  
Ljubljanska 77  
SI-1354 Horjul  
Tel: + 386 (0)1 75 58 200  
Fax: + 386 (0)1 75 49 226  
E-mail: metrel@metrel.si  
http://www.metrel.si

Note! Photographs in this catalogue may slightly differ from the instruments at the time of delivery. Subject to technical change without notice.